

Dangerous Things

<http://dangerousthings.com>

DIY RFID Implantation Guide

Written by Amal Graafstra
<http://amal.net>

Disclaimer

This is not a medical text, an implantation manual, or even an explicit set of instructions for you to follow. This is simply a guide intended for those who would otherwise choose to undergo this procedure with no guide or reference, and as such, this guide is designed to enhance the safety of “at home” and “do it yourself” surgical procedures performed by laymen who might otherwise act in an unsafe manor upon themselves or others. Anyone reading this guide agrees to take full responsibility for their own actions and the consequences and ultimate results of those actions. I am not a medical professional or licensed to perform any body modification or piercings in any state. This guide has not been reviewed or analyzed by medical professionals for safety, accuracy, or effectiveness. For those of you who do not wish to take full responsibility for your actions and the resulting consequences, stop reading now.

What you'll need

- One sterilized 2x12mm RFID tag
- DIY RFID Injection Kit
- Paper Towels
- Small adhesive bandage(s)
- A good friend with a steady hand

The RFID Injection Kit Includes

- Two non-latex, non-sterile gloves
- One sterile povidone-iodine swabstick
- Two sterile latex free gauze pads
- One sterile SUDs pet ID tag injector



Part 1 – Preparation

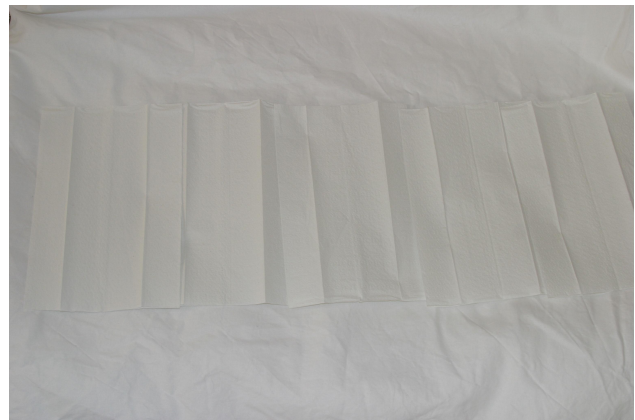
Be well hydrated. Be healthy (not sick).

Everyone wash their hands! Once you've cleaned up, you will want to mark your hand for implantation. Dig your finger into your hand to feel out your bones and how they are situated. Use a black sharpie and mark your thumb and index finger metacarpal bones. This will create a kind of V shape, then make sure you mark the U shaped end where they come together. This will give you a sense of where you will want the tag to rest once implanted.



You may be tempted to make the tag site mark directly in the center between the bone lines, but I find it's better that the implant lay parallel to the index finger metacarpal bone. The reason becomes apparent when you close your hand. In fact, you may want to mark the implant's resting site when your hand is closed. However, you will definitely make the bone marks with your hand open.

You will want to select and prep an appropriate area for the procedure. The best type of surface to use is a solid table that you and your friend can sit directly across from each other at. You will want to lay down paper towels because the iodine swab can get a little messy.



Now it's time for the gloves! Have your friend put on the gloves and tear open the iodine swabstick. Looking at the back of the swabstick where the instructions are, there is a clear “this side up” indicator, and on each side of the top end are indentations for easy tearing.





Swab the area around the implant site, particularly on either end of the long-way end of the tag mark. Iodine takes 2-3 minutes to settle in and do it's job.

Once you're properly covered with iodine, your gloved friend can try placing it back into the envelope it came in.

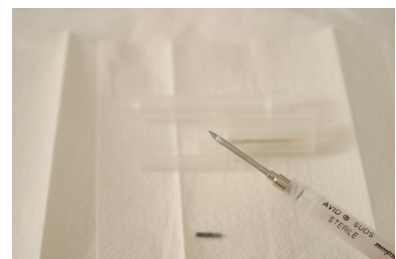
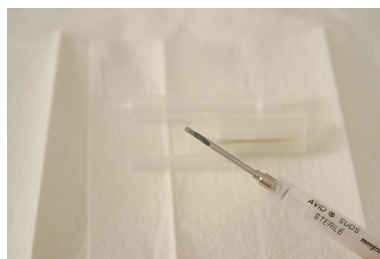
While waiting for the iodine to do it's thing, it's now time to start dealing with sterilized items. Everything up till now, including the included gloves, are not sterile. It's important to keep in mind which items and surfaces are sterile and which are not from this point forward.



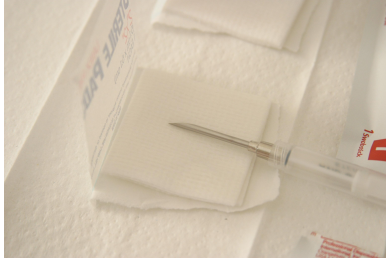
Take the two sterile gauze pads and tear off the top and sides of each, but do not touch the pads inside. Pull down or tear off one side of the paper covering the pads, and lay the pads on the paper towel (remaining paper side down).



Remove the 3 protective covers on the sterile SUDs injector. Once the covers are off, press down the plunger until you eject the pet tag from the needle end and put it aside. You should see the small white plastic end of the plunger protruding from the end of the needle. Then pull the plunger back to it's original location to make room for the intended RFID tag inside the needle.



Now place the sterile end of the needle gently on to the sterile side of one of the gauze pads. Grab the sealed envelope containing the RFID and open by the end opposite the adhesive flap with instructions printed on it. Keep in mind the inside of the envelope is sterile and your hands are not, so use the envelope to carefully manipulate the tag without directly touching it. If you need a safety net, you can carefully unfold one of the gauze pads by the corners and work the tag over the gauze so if it falls it will fall onto a sterile surface.



Manipulate the tag into the open end of the injector needle. If necessary, gently tap the plastic housing of the injector (not the metal needle) so the tag falls down inside. Press the plunger up until you barely see the end of the tag inside the needle. Be sure the top of the tag is at least 2mm to 3mm deeper than the beveled/sloped end of the needle. Try not to breath on the end of the needle while working the tag into it :)

By now, the iodine should be ready to be wiped off. Hand the loaded needle to your gloved friend and carefully pickup a piece of gauze. Be sure not to tip the needle end downward or the tag can slide out. Carefully wipe the excess wet iodine off of your hand and get ready for the implantation procedure.



Part 2- The procedure



Your friend will really need to grip the injector. The process of inserting the needle involves two hurdles. The first is the initial incision done by the sharp tip of the needle. The second hurdle is pushing past the beveled rear of the needle opening. The purpose of this beveled end is to fold a small flap of skin up and under so it flips back down upon removal so you don't have a giant hole left in your skin, just a U shaped cut.

From this point on these instructions are for your gloved friend.

You will need both hands for the procedure. With one hand, pinch the skin and pull it up so it creates a small “tent” type of structure. The goal will be to insert the needle into the pocket created by pulling the skin up. The incision should be made at least 2mm to 3mm in front of the marked tag resting site.



As the needle makes its way in, ensure the needle is angled in such a way that it will not go deep into tissue and will not make it's way out of the skin further back. The goal is to rest the tag between the dermis and lower tissues, resting right in the fascia. As the needle makes the incision, slowly relax your pinch and as you push past the beveled area, it will “pop” in. You will want to ensure you insert the needle at least 2mm past the beveled end.

Once you've placed the needle, relax your pinch on the skin completely. Slowly press the plunger completely down and you should see/feel the tag make its way out of the end of the needle and it should rest more or less under the sharpie mark.



Before you remove the needle, ***pick up a piece of gauze and place the clean, untouched side down over the injection site**, then place your finger over the gauze. You will want to place pressure on the site, but not so firm that it causes the needle to indent upon the skin. You want just enough pressure to ensure the tag does not move or get sucked out by the vacuum created as you withdraw the needle.

**Gauze not shown in photo. Photo depicts unsterile conditions.*

Once the needle is out, take a piece of sterile gauze and place it over the incision. Use ***firm*** pressure for 5 minutes (yes, a full 5 minutes) on the incision site. Try not to put pressure on the tag itself, just the incision site.



Please post any questions you may have regarding health concerns, procedure questions, programming the tag, securing the tag, or anything at all to <http://dangerousthings.com>